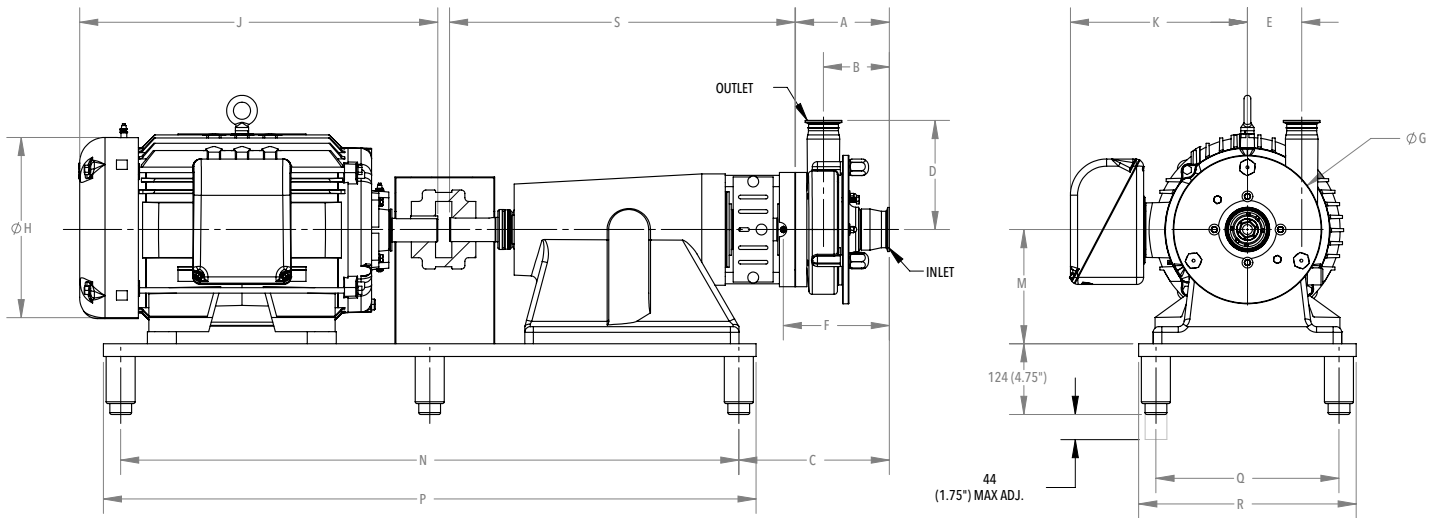


Fristam FS Shear Blender with Bearing Block Dimensional Drawing



DWG. #: 126500728

Pump Model	HP	Inlet	Outlet	A	B	C	D	E	F	G
FS 352	≤25	2.5"	2"	157.5 6.20"	118 4.65"	220 8.66"	190 7.48"	81 3.19"	186 7.32"	230 9.06"
FS 353	≤75	2.5"	2"	164.5 6.48"	115.5 4.55"	264 10.39"	191 7.52"	95 3.74"	186 7.32"	260 10.24"
FS 354	≤75	3"	2.5"	164.5 6.48"	118 4.65"	264 10.39"	211 8.31"	115 4.53"	186 7.32"	290 11.42"
FS 355	≤75	3"	2.5"	170.5 6.71"	119 4.69"	264 10.39"	231 9.10"	140 5.51"	192 7.56"	350 13.78"
FS 355	≤150	4"	2.5"	187 7.36"	119 4.69"	289 11.38"	231 9.10"	140 5.51"	224 8.82"	350 13.78"

Motor HP	NEMA Frame	H	J	K	M	N	P	Q	R	S
10 HP	215T	263 10.34"	469 18.47"	220 8.67"	180 7.09"	558 22.00"	711.2 28.00"	228.6 9.00"	279.4 11.00"	364.8 14.36"
15 HP	254T	270 10.62"	536 21.09"	225 8.86"	180 7.09"	829 32.64"	889 35.00"	244.8 9.64"	304.8 12.00"	364.8 14.36"
20 HP	256T	270 10.62"	580 22.84"	225 8.86"	180 7.09"	829 32.64"	889 35.00"	244.8 9.64"	304.8 12.00"	364.8 14.36"
25 HP	284TS	395 15.56"	670 26.39"	333 13.11"	180 7.09"	1083 42.62"	1143 45.00"	321 12.62"	381 15.00"	605 23.82"
30 HP	286TS	395 15.56"	670 26.39"	333 13.11"	200 7.87"	1083 42.62"	1143 45.00"	321 12.62"	381 15.00"	605 23.82"
40 HP	324TS	430 16.94"	731 28.78"	371 14.62"	203 8.00"	1083 42.62"	1143 45.00"	321 12.62"	381 15.00"	605 23.82"
50 HP	326TS	430 16.94"	731 28.78"	371 14.62"	203 8.00"	1083 42.62"	1143 45.00"	321 12.62"	381 15.00"	605 23.82"
60 HP	364TS	483 19.00"	780 30.72"	380 14.96"	229 9.00"	1108 43.62"	1168 46.00"	371 14.62"	432 17.00"	605 23.82"
75 HP	365TS	483 19.00"	780 30.72"	380 14.96"	229 9.00"	1108 43.62"	1168 46.00"	371 14.62"	432 17.00"	605 23.82"
100 HP	405TS	516 20.31"	966 38.03"	457 17.99"	279 11.00"	1336 52.60"	1397 55.00"	499 19.65"	559 22"	628 24.72"
125 HP	444TS	581 22.87"	1124 44.25"	497 19.57"	279 11.00"	1336 52.60"	1397 55.00"	499 19.65"	559 22"	628 24.72"
150 HP	445TS	581 22.87"	1124 44.25"	497 19.57"	279 11.00"	1336 52.60"	1397 55.00"	499 19.65"	559 22"	628 24.72"

All pump dimensions are in millimeters (inches). Dimensions are based on clamp fittings. Motor dimensions may vary by manufacturer.



Fristam Pumps USA
2410 Parview Road
Middleton, WI 53562-2524

Tel +1 800 841 5001
fristam@fristampumps.com
www.fristam.com/usa